



BLACK
FOREST
MEDICAL
GROUP

DORO LUCENT® DISPOSABLE SKULL PIN



A NEW CLASS OF SKULL PINS

A new class of imaging skull pins has arisen, producing less artifacts and better imaging results than anything seen before. Designed to take the lead in this class, the **DORO LUCENT®** Disposable Skull Pin provides a highly visible advancement compared to the already good imaging results of the **DORO®** Titanium Skull Pin.

CLASSES OF DISPOSABLE PINS FOR ADULTS

Non-imaging

DORO® Disposable Skull Pins
Stainless Steel, item no. 3006-00



Classic
rigid pins

Imaging

DORO® Disposable Skull Pins
Titanium, item no. 3006-20*

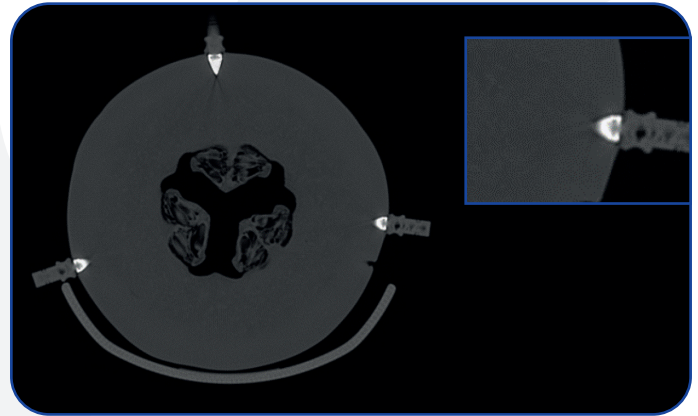


Conventional
imaging pins

DORO LUCENT® Disposable Skull Pins
Item no. 1106.003



High-end
imaging pins



Only minimal artifacts show
when the **DORO LUCENT®**
Disposable Skull Pin is applied.

DORO LUCENT® IS:

- Developed by experts in neurosurgical equipment.
- Reducing imaging artifacts to an absolute minimum.
- Stable and secure due to its unique mixture of radiolucent and titanium components.

The perfect balance of imaging quality
and overall pin stability.



Please find further
information on the
product's web page.



Black Forest Medical GmbH

Headquarters | Bötzingen Straße 86 | 79111 Freiburg, Germany
Phone +49 761 384 222 10 | Email info@blackforestmedical.com

US Subsidiary | 4529 S.E. 16th Place, Suite 101 | Cape Coral, FL 33904
Toll Free 877 225 4086 | Email info.us@blackforestmedical.com

Version 05 © Black Forest Medical GmbH, 07/2025, Freiburg, Germany.

All rights reserved. The information provided was compiled with utmost care. Errors can, however, not be excluded. Errors do not entitle to any legal claims. We reserve the right to modify the products at any time. *Color of 3006-20 depends on country specific approval.



blackforestmedical.com